

Fall in love with
**Landscape
Photography**

Haida

Cover Photo © Duarte Sol (Portugal)



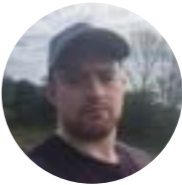


Canon 80D & Canon EF 16-35mm F4 lens

1/160s | f/7.1 | ISO 100

Haida M10 Filter Holder + Haida M10 Drop-in CPL Filter

One of the most iconic views in the Swiss Alps is the Bachalpsee, with the grandeur of the mountains looming large behind. Fortunately, the weather was on our side when we visited it, and the lake and mountains were at their best. Wispy clouds added interest to the sky, and the vibrant autumn light brought out the colour of the water, as well as the shape of the surrounding landscape. The long, undulating walk was more than worth it to experience this place in all its glory.



Matt Owen-Hughes

UK



Petri Puurunen

Finland

Canon 5D Mark IV & Canon 16-35mm

181s | f/11 | ISO100

Haida M10 Filter Holder

Haida Red-Diamond Soft GND0.9 100x150mm + Red-Diamond ND3.0 100x100mm

I have visited our neighbor-country several times, which offers some amazing photo locations. This one had been taken in 2018. Our accommodation located near the beach which I visited for several days. One day was very windy and partly

cloudy as easily can see on the photo. I placed a tripod, set a camera, and placed filters. Longer exposure brought some action to the sky and calmed the water. The composition is centerpositioned to see the famous "dragon eyes".



Canon EOS 6D + Sigma ART 12-24 f/4
f/16 | 60s | ISO100
Haida M15 Filter Holder
Haida M15 Magnetic Nano-Coating CPL
Haida NanoPro MC ND3.0 150x150mm + NanoPro GND 0.9 Soft, 150x170mm



Ryszard Lomnicki

Ireland

The photograph shows Fanad Head Lighthouse at scenic lighthouse located in North part of Ireland, in County Donegal. The picture was taken at the sunset when the last sun rays were touching the building and the rocks illuminating the approach clouds.



Canon EOS 6D & Sigma ART 12-24 f/4
120s | f/14 | ISO100
Haida M15 Filter Holder
Haida NanoPro ND3.0 150x150mm + NanoPro Soft GND0.9 150x170mm



Nikon D800e & Nikon 70-200mm
1/80s | f/9 | ISO100
Haida M10 Filter Holder + M10 Drop-in CPL Filter
Haida Red Diamond Medium ND0.9 100x150mm

After a long hike into the dunes, the wind got stronger and stronger. Just before sunset, I saw some huge dust columns above the Mesquite Dunes. The setting sunset the whole scene on fire and made it to an incredible view. Death Valley National park is famous for its dunes and desert landscape. The National park is the largest protected natural habitat in the lower 48 States.



Dennis Oswald

Germany



Canon 5D Mark II & Canon 14mm f2.8 Lens
15s | f/16 | ISO 50
Haida M15 Filter Holder
Haida Red-Diamond ND1.8 150x150 mm
Haida NanoPro MC Soft GND0.9 150x170mm

The Praia da Ursa, near Cabo da Roca, located in the municipality of Sintra. One of the most beautiful beaches in my country - Portugal, access is difficult and dangerous, very inclined dirt paths, "unsupervised beach" Advisable to go always accompanied.

Once on the beach, the view is astonishing, with the colossal Ursa and Gigante rocks marking the shoreline. Its name is due to the stone shaped bear.

Legend of Ursa Beach. Legend has it that in the Ice Age there lived a bear with their children, and when the thaw began, the Gods told all the animals to flee the coastal areas. But the bear did not want to obey the orders of the Gods she wants to stay with her children. She was born there and wanted to stay there. The enraged Gods turned the bear into a huge rock and their children into small scattered rocks around them, forever and ever.



José Canelas

Portugal



Nauricio Narea Pizarro

Chile

I took this photo in the Huerquehue National Park, Chile. Autumn was coming, the leaves changed color, and I wanted to capture the reflection of peace in that place.



Canon 5D Mark IV & Canon 24-105mm
1/4s | f/14 | ISO100
Haida M10 Filter Holder &
Haida M10 Drop-in CPL Filter



Canon 5D Mark IV & Tamron 15-30mm f/2.8 G2, f/14 | 30s | ISO100
Haida M15 Filter Holder + Haida Red-Diamond ND1.8 150x150mm



Canon 6D & Canon16-35 f/4 L IS USM 35mm

1/80s | f/8 | ISO 50

Haida M10 Filter Holder

Haida Drop-in CPL Filter

Haida Red-Diamond Soft GND0.9 100x150mm



özkan uluçam

Turkey

After a long and arduous journey with my friends, this scene that I saw at this point made me get rid of all my fatigue. And I took countless photos in this landscape. This region hosts various animal species along with its natural beauties. The area where I photographed is over 2,000 meters.

Uludag National Park, Bursa, Turkey



Canon 6D + Samyang F2.8, 14mm

30s | f/7.1 | ISO50

Haida M15 Holder System

Haida M15 Magnetic CPL + Red-Diamond ND 1.2, 150x150mm



Canon EOS 6D + Canon EF 16-35mm F4, 35mm

126s | f/13 | ISO50

Haida M10 Holder System

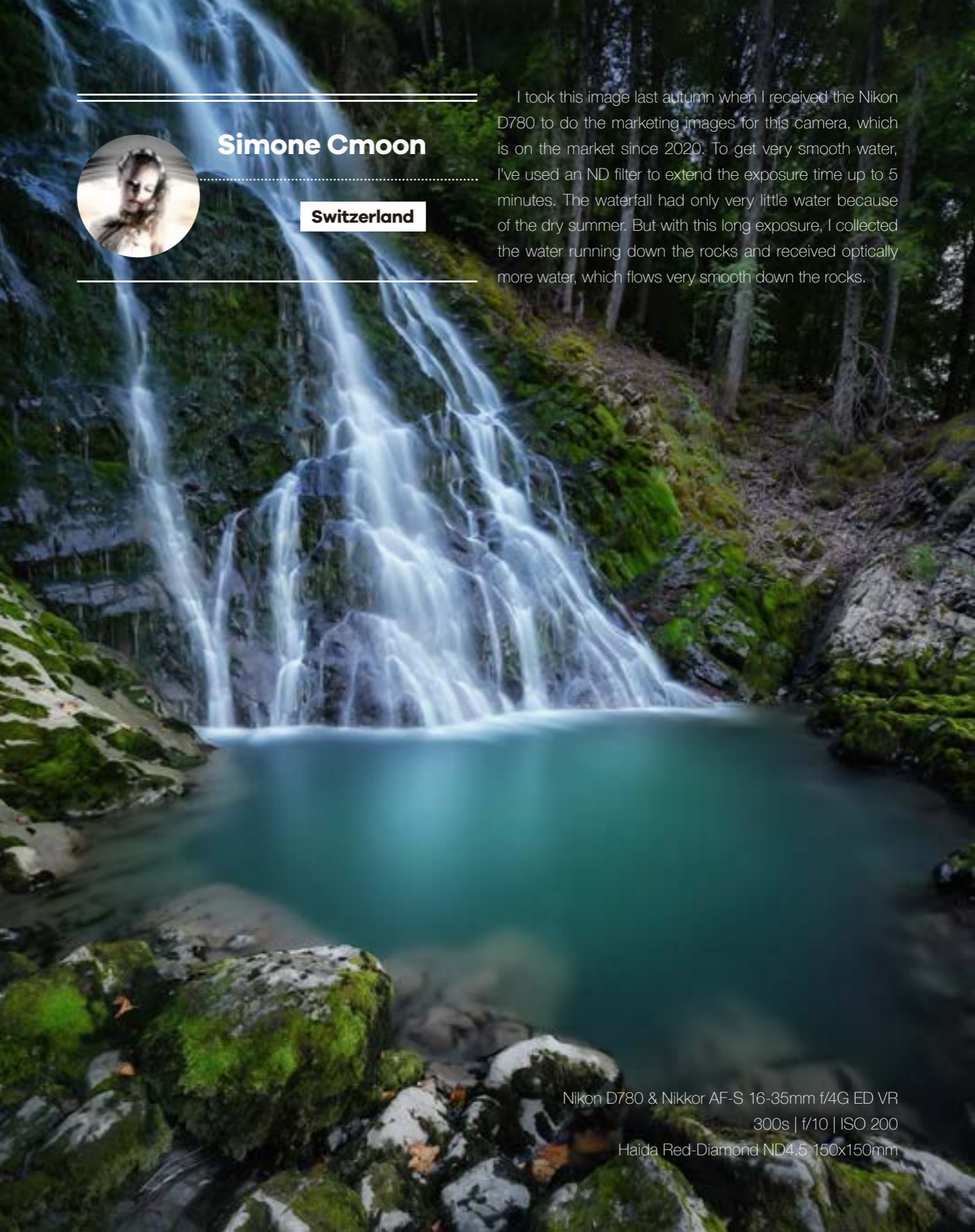
Haida M10 Drop-in ND3.0 + Red-Diamond Soft GND0.9 100x150mm



Canon 6D & 16-35 f/4 L IS USM 35mm
180sec | f/8 | 1 ISO 50
Haida M10 Filter Holder
Haida Red-Diamond Medium ND0.9 100x150mm



Canon 6D & 16-35 f/4 L IS USM 35mm
1/80sec | f/8 | ISO 50
Haida M10 Filter Holder
Haida Red-Diamond Soft Medium ND0.9 100x150mm



Simone Cmoon

Switzerland

I took this image last autumn when I received the Nikon D780 to do the marketing images for this camera, which is on the market since 2020. To get very smooth water, I've used an ND filter to extend the exposure time up to 5 minutes. The waterfall had only very little water because of the dry summer. But with this long exposure, I collected the water running down the rocks and received optically more water, which flows very smooth down the rocks.

Nikon D780 & Nikkor AF-S 16-35mm f/4G ED VR
300s | f/10 | ISO 200
Haida Red-Diamond ND4.5 150x150mm



**Dylan
Giannakopoulos**

Australia

Sony α7r III & Sony FE 16-35mm
20s | f/8 | ISO 100
Haida M10 Filter Holder
Haida M10 Drop-in CPL Filter
Haida Red-Diamond ND1.8 Filter 100x100mm

As I photographed this beautiful seaside town from above with my family by my side, two local singers began performing Ave Maria from the docks below. The voices of the duet echoed through the town and well into hills, making for the perfect ending to my time in Cinque Terre.

Using the Haida M10 filter holder with a drop-in M10 CPL filter, I was able to boost the vibrancy of the blue tones rotate to reduce the glare. I also used my Red-Diamond 6-Stop ND filter to slow my shutter speed and to smooth the water.



Steven Schulz

USA

Fujifilm XT3 & Fujinon XF 10-24mm f4
0.5s | f/8 | ISO250
Haida M10 Filter Holder
Haida M10 Drop-in CPL+ND1.8 2in1 Filter
Haida Red-Diamond Soft GND0.9 Filter 100x150mm

Neuschwanstein Castle is an amazing piece of architecture I always wanted to photograph. After some research, I knew from where I wanted to take the shot. So the day came and I walked up to the castle and I mentally went through everything to make sure I have enough time to get the shot. I got the path that leads to the bridge this was photo was shot from and there was a sign that said that the bridge is

under construction and closed. I decided to still walk over to the bridge to see if I can find a different vantage point. When I got to the bridge I all of the sudden saw that the bridge was open. It literally opened up that day. Probably one of my luckier moments. I felt even luckier to finally be able to get a photo of this amazing castle.

I have been so many times in Prague, but never got the perfect weather conditions I had during this morning at the famous Charles Bridge. During my last photo workshop, we started taking photos covered in a thick, grey fog. After a while, the sun came up, so fog begins floating away. The light was better and better from every minute. The sun came up directly behind the bridge. To handle the

hard contrast and the different light, I started using a Soft Graduated Neutral Density Filter (GND 0.9) beside the Red-Diamond ND 3.0 for smoothing the water to become a cleaner reflection. The Soft GND 0.9 was perfect in darkening the sky around the upcoming sun, so I was able to take this shot without too bright and too dark parts in the photo.

Sony a7rII & Sony 24 - 105 mm F4 G SSM OSS
260s | f/8 | ISO 100
Haida M10 Filter Holder
Haida Red-Diamond ND3.0 Filter 100x100mm & Soft GND0.9 Filter 100x150mm



Ronny Behnert

Germany

I have been so many times in Prague, but never got the perfect weather conditions I had during this morning at the famous Charles Bridge. During my last photo workshop, we started taking photos covered in a thick, grey fog. After a while, the sun came up, so fog begins floating away. The light was better and better from every minute. The sun came up directly behind the bridge. To handle the hard contrast and the different light, I started using a Soft Graduated Neutral Density Filter (GND 0.9) beside the Red-Diamond ND 3.0 for smoothing the water to become a cleaner reflection. The Soft GND 0.9 was perfect in darkening the sky around the upcoming sun, so I was able to take this shot without too bright and too dark parts in the photo.

Sony a7r II & Sony FE 16-35mm f/2.8 GM
30s | f/13 | ISO 50
Haida M10 Filter Holder
Haida Red-Diamond ND3.0 Filter 100x100mm
Haida Red-Diamond Soft GND0.9 Filter 100x150mm



Canon 5D Mark III + Canon 16-35mm
30s | f/11 | ISO 100
Haida M10 Filter Holder
Haida Red-Diamond Reverse GND0.9 100x150mm



Duarte Sol

Portugal

What makes an amateur photographer leave the comfort of his home day after day in search of the perfect sunrise, if not pure love, pure passion?

After a frustrating outcome the day before, we involved jumping out of bed at 5:00 on a windy and cold morning. We tried our luck again, almost at the same location we had chosen the day before.

After piercing through the darkness of the night, turn after turn, we reached our destination, we found a spot high above the clouds and with the sun still a good 30 minutes away from turning up on the horizon. Over 1800 meters high at Pico do Arieiro, accompanied by a cold cutting and dare punishing wind,

we found ourselves facing a blanket of clouds worthy of any film produced in the American Mecca of cinema. The conditions, though harsh, were looking good. We left to see if we would be able to take advantage of them.

At that moment, I thought, even if I do not take any pictures. It would have been worth just for the show what revealed before our eyes. As the sunlight illuminated the valley before us, obviously that we had chosen well... The show, which is renewed every day but surprisingly different every time. That day booked for us a dance of clouds roaming through the mountain peaks, without rules or standards set and that in our eyes looked like one symphony of the senses with color, wind, cold... in tune

with some great than us all.

After the first shots, I saw this opportunity. The composition, already magnificent, gained a scale with the introduction of the human element that contemplates and records the moment for eternity. One of my companions of numerous outputs added as he headed there: "I go there so you can make the photo of the day!" And it turned out he was right!

With a little productive result the day before, it would have been much easier to stay in the comfort of a warm bed instead of going out in the wind and the cold that kept us a company that morning... But at the end of the day, it all paid off. And I was able to make one of my favorite shots of all time!



Nikon D750 & Nikon 16-35mm
15s | f/8 | ISO 100
Haida NanoPro ND1.8 Filter

One of the photos that excite me the most is this. It was in El Chaltén, Argentina. It was one of those moments that filled me with emotion and happiness.

Only a few photographic trips I share with my wife, and this was one of those. We arrived at the place, prepared the snack, and sharing some mates (typical Argentinian tea) and talks we could see an incredible and perfect sunset, in solitude and silence, listening only to the glaciers creak in the background as if they were thunders before those bigs the storms.

The weather was cold, and there was much ice floating around the lake. I was able to compose with one of those, adding beautiful light and the spectacular Cerro Torre.



Lepe Olmedo

Argentina



I was looking for a dramatic place with the correct lighting at sunset. Finally, a local guy told me that there is a sort of "fiord" - were perfectly exposed to the marvelous light of the setting sun.

I drove 2 hours to get there in time, and to find where to put my tripod. In the end, the outstanding light rewarded me for all my troubles.

Sony a7R II & Laowa 15mm f/2 D-Dreamer
30s | f/11 | ISO100
Haida M10 Filter Holder
Red-Diamond ND1.8 Filter 100x100mm
Red-Diamond Medium ND0.9 Filter 100x150mm



Tommaso Di Donato

Italy



Nikon D810 & Sigma 14-24mm, 14mm
f8 | 1/4s | ISO 64
Haida M15 Filter Holder + ND 0.9 Filter

That morning in Vík, Iceland, I scaled so many huge rocks to get to the other side of famous black beach. And, successfully I got far away from crowd. Here I saw a fresh new look of Vík's rocks, the sunrise was just hidden behind the huge rocks, exuding the charming glow. It is lucky that I carried the Haida filters with me and got this smoothy sea wave capture by them.



Yanting Liu

China



Canon EOS 5D Mark IV & EF 16-35mm f/4L IS USM
150s | f/13 | ISO50
Haida M10 Filter Holder
Haida M10 Drop-In ND3.0 Filter
Haida Red-Diamond Medium ND0.9 100x150mm



Frank Leinz

Germany

With sunset in the Death Valley desert, the mountains and the sky were basking in the beautiful golden light as time goes on.

To give the picture even more peace, I was able to extend the exposure time to 150 seconds with the Haida Drop-in ND 3.0. As a result, the moving clouds have become soft golden stripes - a nice contrast to the hard and dry ground.



Nikon D750 & 16-35mm f/4 Nikon lens
79s | f/8 | ISO100
Haida M10 Filter Holder
Haida M10 Drop-in ND3.0 Filter
Haida Red-Diamond Soft GND1.2 100x150mm



Duncan Cauchi

Malta

It was a beautiful wintery day in February, and in the afternoon, as is normal practice, I met a couple of friends and hiked towards Riviera Beach to shoot a sunset from Qarraba promontory. Just a few minutes before dusk some streaks of high clouds started to appear and a few minutes later we were gifted with this beautiful Fiery Sky.



Norway is a beautiful country for landscape photographers. In winter, thousands of Northern Lights hunters come there to see the stunning Aurora. At the same time, colorful sunrises and sunsets are quite rare. However, if you manage to catch them, they will surprisingly change the monotonous white landscapes.

Neither a strong wind nor frost nor Covid-19 prevented

a company of photographers from China, France, Italy, and the UK from capturing one of these stunning sunrises.

Canon EOS 5D Mark IV & EF 16-35mm f/2.8L III USM

30s | f/8 | ISO 200

Haida M10 Filter Holder

Haida Red-Diamond ND3.0 100x100mm



Olga Tarasyuk

UK



Hasselblad X1D, XCD 45 (Panorama) 77mm
3s | f/16 | ISO 200
Haida M10 Filter Holder
Haida Red-Diamond Soft GND0.9 100x100mm



Isabella Tabacchi

Italy

It is an image taken in Lofoten in February 2019. That year, my usual Lofoten tour was very windy, rainy, stormy and snowy but not without moody scenes that were interesting! It was a cloudy sunset, so the sky was not so colorful, but there was a little, soft glow that illuminated the mountain on the left of the image and the cloud above it. I loved the three dimensionalities created by the snow on the rocks.



Hasselblad X1D, XCD 45 (Panorama) 77mm
0.3s | f/13 | ISO 100
Haida M10 Filter Holder
Haida Red-Diamond Soft GND0.9 100x100mm



Dorian Pellumbi

Italy

This is a photo I took on one of my recent trips to France, more precisely to Bordeaux.

After exploring the city all afternoon I stopped on this beautiful bridge built by Napoleon in 1830 to take some evening photos of this view. I really liked the street lamps lit with the church in the background and the starry sky. To be able to have a balanced result I used the bracketing technique. The technique consists of taking 2 or more photos of the same view in order to have a correct

**Photo 1 Sony A7III & 70-200mm at 70mm
6s | f/16 | ISO 100**

**Photo 2 Sony A7III & 70-200mm at 70mm
30s | f/16 | ISO 100**

**Haida M10 Filter Holder, M10 Drop-in CPL Filter
Haida Red-Diamond ND1.8 100x100mm**

exposure on all the subjects that interest us. In this case the lights and the starry sky. I, therefore, made 2 shots, one for the sky with longer exposure time and one for the street lamps at a lower time. For these shots, I used a Sony a7iii with a 70-200mm lens and the Haida M10 filter kit. More specifically, I used the polarized filter and a neutral density filter ND Red-Diamond 1.8. I then merged the 2 photos together on Adobe Lightroom.



**Fujifilm XT2 & Fujinon XF 8-16 2.8 LM WR
40s & 240s | f/8 & f/4 | ISO400 & ISO1000
Haida M15 Filter Holder
Haida M15 Magnetic NanoPro Clear Night Filter**

Upon seeing that this curve leads to the galactic center at a specific hour, I know I had to capture light trails that will strengthen what I have envisioned. The fast-moving clouds added depth and drama, so I decided to have them instead of waiting for a clear sky. To reveal more details from the Milky Way, I used a star tracker that allowed me to have a long exposure without causing star trails. The consequence of this method is that it will result in a blurred foreground that is why I stacked a clean foreground.



**John Kimwell
Laluma**

Philippines



Canon 5DSR + 24-105mm Lens
30s | f/5.6 | ISO100
Haida M10 Filter Holder
Haida M10 Drop-in ND1.8
Haida Red-Diamond ND3.0 100x100mm



Jack Curran

USA

I found myself above these fast-moving clouds late in the day at sunset. As it turned out, I only got one exposure before the sun went down.



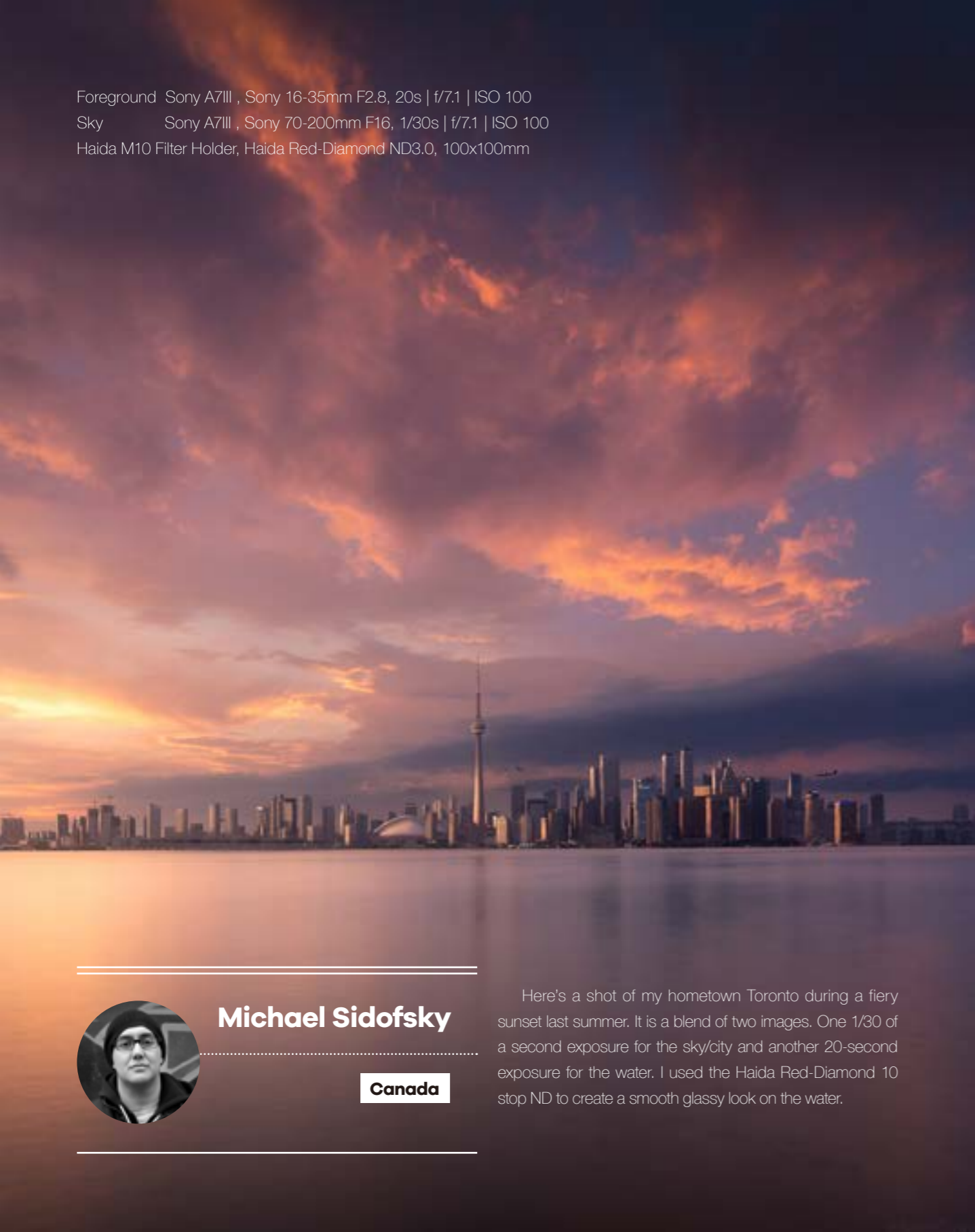
Andrew J Clarke

Australia

On my first trip after picking up my Haida filters, I traveled to Melbourne Australia to run a workshop with fellow Haida Co-Photographer Dylan Giannakopoulos. I spent the evening scouring the city for vantage points, eventually finding this elevated location in Southbank. Using the Haida CPL at night enabled me to cut out a lot of the glare and reflections on the asphalt and in the city buildings, making the colorful lights pop against the dark cityscape.



Sony A7RIV + Zeiss Batis 18mm
30s | f/11 | ISO100
Haida M10 Filter Holder
Haida M10 Drop-in CPL Filter



Foreground Sony A7III , Sony 16-35mm F2.8, 20s | f/7.1 | ISO 100
Sky Sony A7III , Sony 70-200mm F16, 1/30s | f/7.1 | ISO 100
Haida M10 Filter Holder, Haida Red-Diamond ND3.0, 100x100mm



Michael Sidofsky

Canada

Here's a shot of my hometown Toronto during a fiery sunset last summer. It is a blend of two images. One 1/30 of a second exposure for the sky/city and another 20-second exposure for the water. I used the Haida Red-Diamond 10 stop ND to create a smooth glassy look on the water.



Sony ILCE-7RM2 + 16-35mm F2.8 Gmaster Lens
30s | f/5 | ISO160
Haida M10 Filter Holder
Haida M10 Drop-in ND3.0 Filter
Haida Red-Diamond Medium ND0.9 100x150mm



**Koray
Özpalamutçu**

Turkey

In January 2020, I was invited to Amsterdam to take photos around the Amsterdam Area by the @lamsterdam. Broek in Waterland and Vondel Park are great places to take long exposure photos with my filters. And the weather was cloudy and rainy a bit. These places look peaceful and calm me then I don't want to miss it. Then I took this beautiful small village photos.



This dramatic seascape long-exposure scenery captured with a Haida filter at the famous and stunning Camel Rock in Bermagui, New South Wales, Australia.

Australia is a big country, and it is very common to travel for hours only to get to one location. One weekend my partner George Triantafillou and I went on a road trip along the east coast of Australia to finally photograph this magical place. From Melbourne, it is approximately 700km and a 10-hour long journey to Bermagui by car.

The next morning after a late arrival, we got up super early and made our way down to the Camel Rock. It was cold, and the wind howled around us. As the sun began to rise and the clouds started to light up, I anticipated the potential

for a moody atmosphere.

For me in photography, is not all about the colors in the sky. I prefer to capture the dark mood in the worst weather conditions. In the end, it's all about feeling free with what you are doing and challenging yourself in photography.

It's a beautiful thing if you are able to transmit the atmosphere of your location to others with your images. Enjoy the moment as much as possible, become a part of the scene and the places you are visiting, immerse yourself in the location, and just work with what mother nature is giving you. With a little bit of help from a great Haida filter, you too can deliver a stronger impact from your landscapes.

Canon EOS 6D + Canon EF 16-35mm f/2.8
0.3s |35mm | f/22 | ISO50
Haida NanoPro ND0.9 Filter

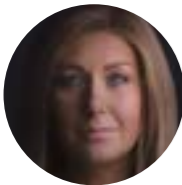


Viva Karolina

Australia



Canon 5d mark IV + Canon 16-35mm L Lens
f11 | ISO 100 | 63s
Haida M10 Filter Holder
Haida M10 Drop-in CPL
Haida Red-Diamond Medium ND0.9 Filter



Jenny Cameron

UK

On arrival the light was bouncing all over the place, it had been one of those typical Scottish days where you get all four seasons in one day, this can prove to be very successful for landscape photography as it seems to bring the purest of light, what I call "sparkling- light". However, this can bring difficulties with light management - You need to be in control of the light, not the light controlling the image. To do this, I used a Haida M10 CPL, which is my go-to filter to control highlights and Haida Red-Diamond Medium 0.9 (3stops), which produced some real magic. The Callanish stones no matter how many times I visit never fail to make the hairs on the back of my neck stand up, there's something very spooky but quietly spiritual about it makes you think about the history which dates back to the stone age over 5000 years ago. The sky didn't pop as much as I hoped due to the time of year and day time temperatures. I stayed till dusk watching the sun dip below the horizon, all very peaceful at such an iconic location.



Julien Brebion

France

I took his ama Dablam portrait during the start of an altitude snowstorm. I was over 5000m stand at Pheriche peak to capture this moment. The descent was a bit tricky, considering the small little spike of ice starting to come into my face because of the storm. It's always risk management to capture an atmosphere like this one, deciding when it's the best moment to take the pose, and when it's a necessity to get back to base camp to be safe. I love sneaking between the edge of security, and the danger always gives me terrific and gorgeous Himalayan sceneries.

Canon EOS 1D Mark III + Canon EF 24-70mm F4 L IS USM
1/320s | f16 | ISO 200
Haida M10 Filter Holder + Drop-in CPL
Haida NanoPro Soft GND0.9, 100x100mm





**Thomas
Buchmann**

Germany

**Canon 5D Mark IV + EF 16-35 f/4 L IS USM, 16mm
f/9 | ISO 100 | 326s
Haida M10 Filter Holder + M10 Drop-in ND4.5**

We do not have much snow nowadays, but fortunately, there were some in January 2019. A beautiful snowshoe hike led me to the summit of one of the peaks in the Fichtelmountains located in northern Bavaria. The frozen spruces immediately caught my attention.

After enjoying nature for a while and looking for a decent composition, I used the Haida M10 filter holder with a Red-

Diamond 0.9 Medium GND filter on my wide-angle lens. However, I was not completely happy with the result. The sun still covered by clouds, and the light looked a bit dull. Therefore I decided to use the brand new Drop-in ND4.5 (15 stops) neutral density filter for a long exposure. I exposed 326s, and during that time, the clouds moved a bit to reveal the sun at the end of the exposure time.



Ennio Scarcelli

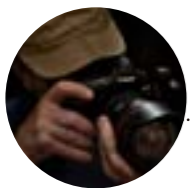
Italy

This picture took in the Dolomites UNESCO heritage, Italy. The mountain is called "Sass de Putia" is 2.875 m high. The summit is located inside the Puez-Odle natural park, near the Passo Delle Erbe.

This place offers various photo spots in every season of the year, and getting here is very simple.



**Nikon Z7 & Nikkor Z 14-30mm
f/16 | 20sec | ISO64
Haida M10 Filter Holder
Haida M10 Drop-in CPL + Haida Red-Diamond ND1.8, 100x100mm**



**George
Triantafillou**

Australia

**Canon EOS 5DSR + Canon EF 16-35 f/2.8L II, 16mm
3.1/5s | f/11 | ISO100**

Haida M10 Filter Holder System

Haida Red-Diamond ND0.9, 100x100mm

Haida Red-Diamond Soft GND0.9, 100x150mm

It was a spectacular evening so we decided to spend the rest of the day at Bermagui photographing the Horsehead Rock. After I found my favorite composition, I stayed there and kept enjoying the view. The extraordinary light was offering

a colorful display and was changing the sky from bright and quiet to dark and a bit stormy. I started to analyze how my perception of nature has changed over the years and how my personal development as a landscape photographer has evolved. This

continuous landscape metamorphosis as seen in the photo is very similar to my personal transformation in the way I create my landscape photography. Never static and always evolving...



Canon 6D + Tamron 15-30 f 2'8 G2
f/2.8 | 20s | ISO 800
Haida M15 Filter Holder
Haida Red-Diamond ND1.8, 150x150mm
Haida Red-Diamond Reverse GND0.9, 150x170mm



Sergio Abello Villanueva

Spain

Canon 6D + Tamron 15-30 f 2'8 G2
f5 | ISO800 | 15mm | 30s
Haida M15 Filter Holder
Haida M15 Magnetic Clear-Night Filter

Sunset was coming soon, I knew I still had a long way to go to the location we had visited before.

The last visit made us think of a much more attractive and risky photo for another opportunity, and the sun should be falling on the stone on which the arch located. I made all the necessary calculations to know the days and times when I could find the image that we had thought about so much.

After the walk to that point, I arrived with enough time to prepare my equipment and frame, and the sun was already on the arch, I calculated the parameters and placed my filter Haida Red-Diamond Reverse GND 0.9. I was shooting as the sun kept level with the edge of the top of the arch. With the photo made on my camera, you could see the flare perfect. I picked up my gear and started on the way back home.

